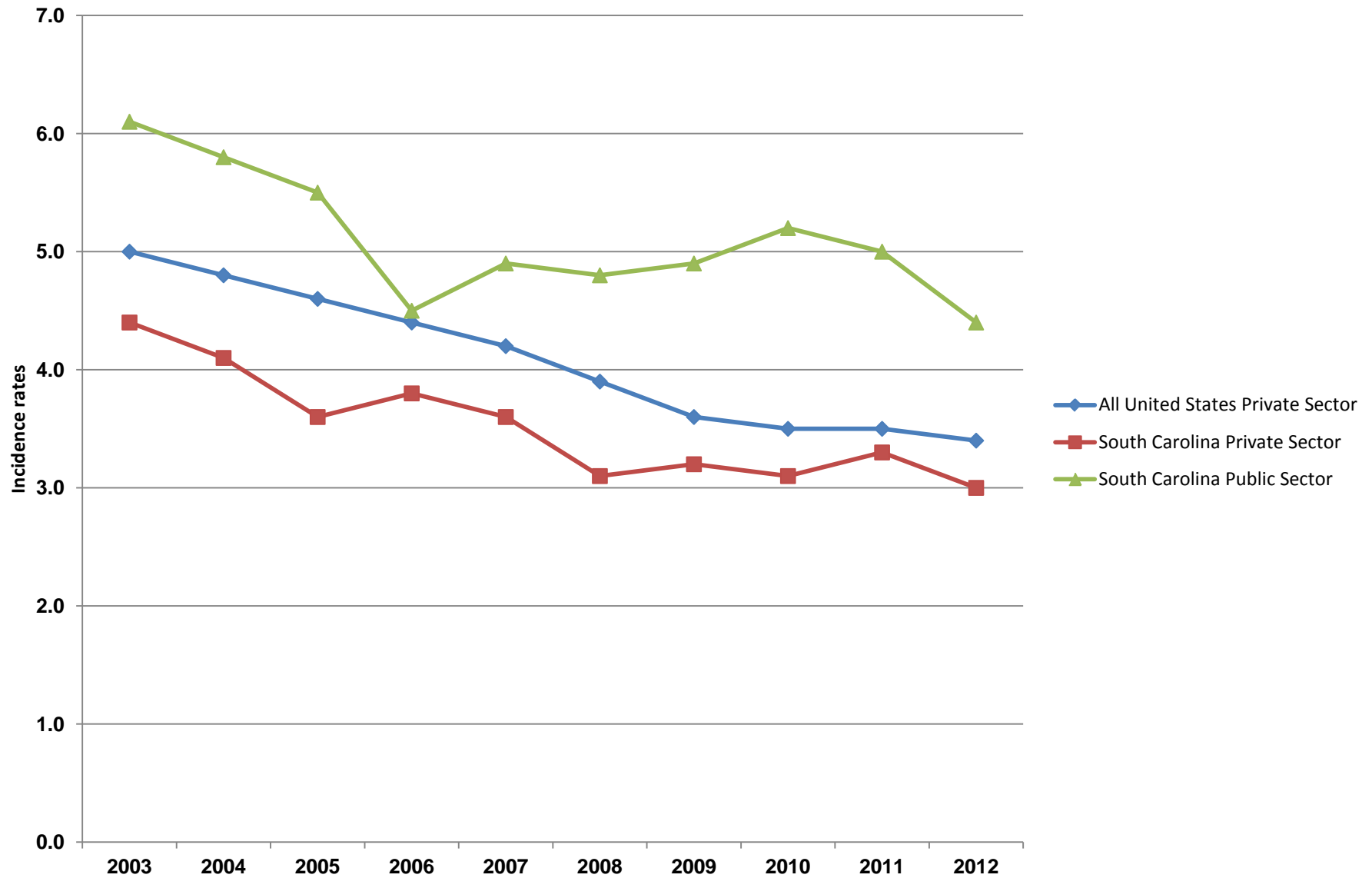


Incidence rates per 100 full-time workers for total nonfatal occupational injuries and illnesses, South Carolina and All United States, 2003-2012



	2003	2004	2005	2006	2007	2008	2009	2010	2011	2012	
All United States Private Sector	5.0	4.8	4.6	4.4	4.2	3.9	3.6	3.6	3.5	3.5	3.4
South Carolina Private Sector	4.4	4.1	3.6	3.8	3.6	3.1	3.2	3.2	3.1	3.3	3.0
South Carolina Public Sector	6.1	5.8	5.5	4.5	4.9	4.8	4.8	4.9	5.2	5.0	4.4